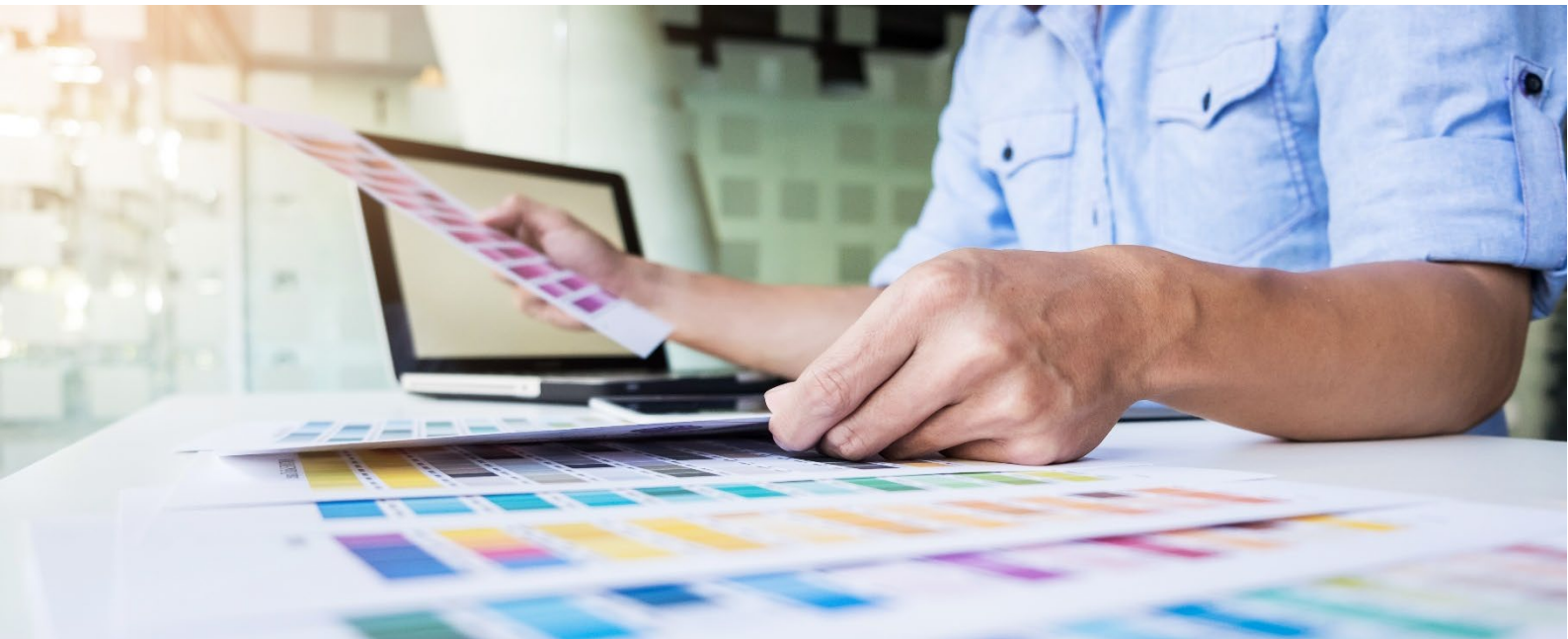


ColorGATE PCMS Color Management Testsuite

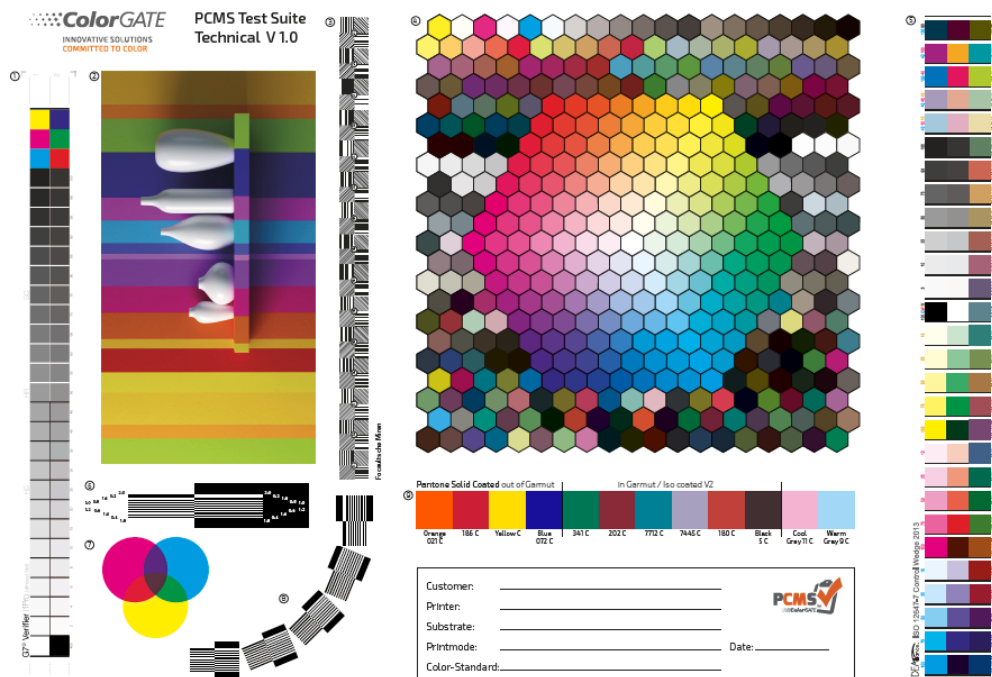
PCMS Testpage Print Instructions

V1.0 October 2020



Contents

Introduction	3
What needs to be printed?	3
Which settings should be used?	4
What should I do after printing?	5
What happens after I sent the prints to ColorGATE?	5



Technical V1.0 is a PDF 1.6 document

For the evaluation it is necessary to print out both pages and fill in the information fields.

Customer:	_____		
Printer:	_____		
Substrate:	_____		
Printmode:	_____		Date: _____
Color-Standard:	_____		

Customer:	Please enter the company name and name of the contact person
Printer:	Which printing system was used? Vendor and model
Substrate:	What material was printed on?
Printmode:	What resolution was used? If applicable, number of print passes, used inks, etc.
Date:	The print date
Color-Standard:	If you want to achieve a color standard and it is set, please enter it here, e.g. ISOcoatedv2, PS0coatedv3

3. Which settings should be used?

The prints should be printed with the default settings that you also use in the production of customer orders. Please do not try to use special settings to "improve" the output. This is about analyzing your production environment and not about spending time and effort to optimize output.

Correct and color-accurate output is also possible in an automated process, additional effort should not be necessary.

4. What should I do after printing?

Please pack the prints and enclose a short cover letter to whom we can send the reply and the report. The report will be sent by email, so a working email address is required. A business card would be sufficient.

Please send the envelope or package to

*ColorGATE Digital Output Solutions GmbH
PCMS Lab
Grosse Duewelstr. 1
30171 Hannover – Germany*

5. What happens after I sent the prints to ColorGATE?

After the prints arrive at our premises, the analysis process begins. We evaluate the prints visually, take measurements and create a report. In this report we present the results in an easily understandable way, so you can quickly and clearly see where the strengths of your process lie and where there is potential for improvement.

The creation of the report requires a lot of time to ensure a precise evaluation as carefully as possible. This will take about 7-10 days.